

N.E. 1/4

109

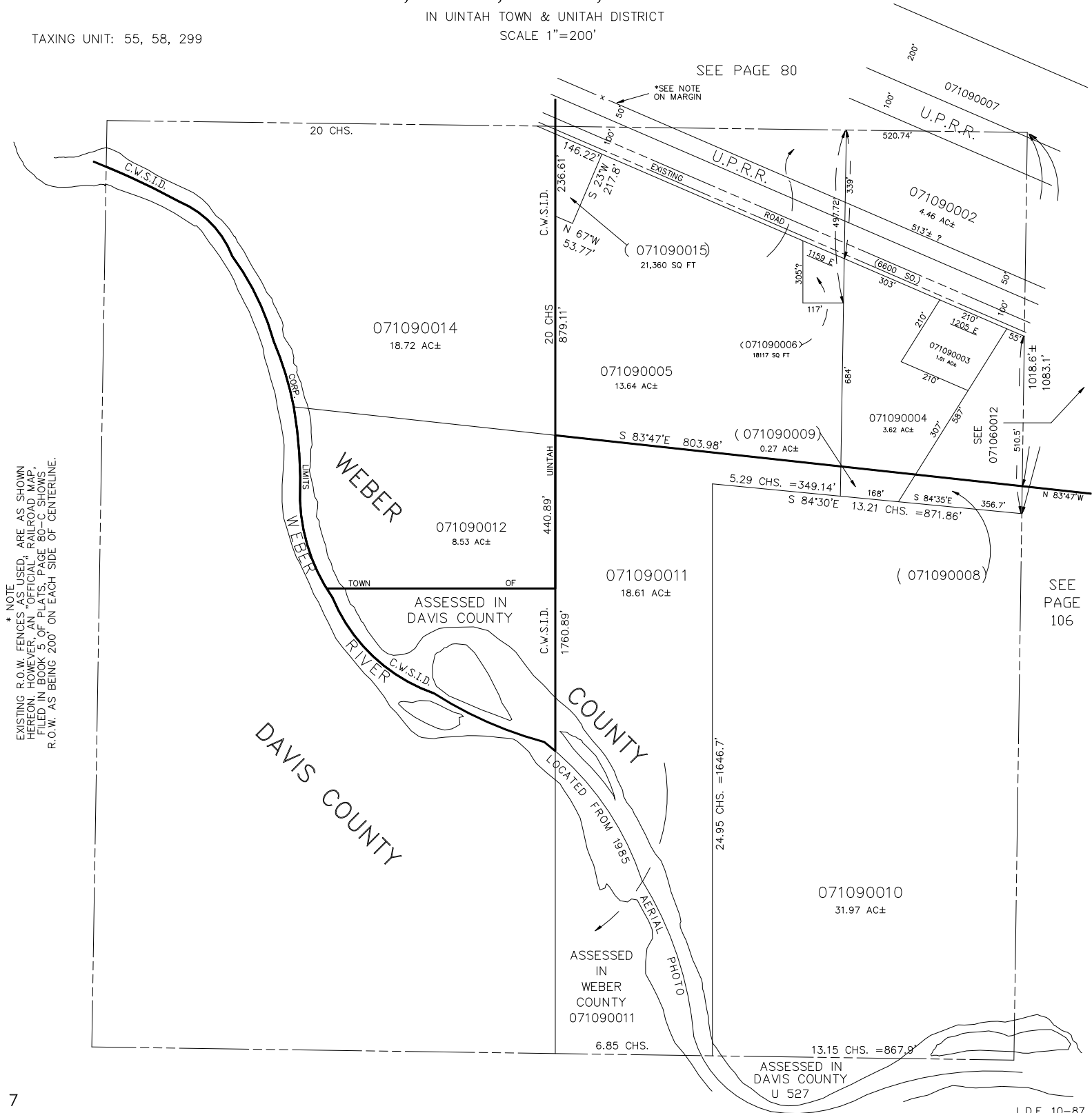
SECTION 28, T.5N., R.1W., S.L.B. & M.

IN UTAH TOWN & UTAH DISTRICT

SCALE 1"=200'

TAXING UNIT: 55, 58, 299

SEE PAGE 80



\* NOTE  
EXISTING R.O.W. FENCES AS USED, ARE AS SHOWN  
HEREON. HOWEVER, AN "OFFICIAL" RAILROAD MAP,  
FILED IN BOOK 5 OF PLATS, PAGE 80—C SHOWS  
R.O.W. AS BEING 200' ON EACH SIDE OF CENTERLINE.

SEE  
PAGE  
106